

CONSTANT CURRENT SOURCE; Model : CCS-01

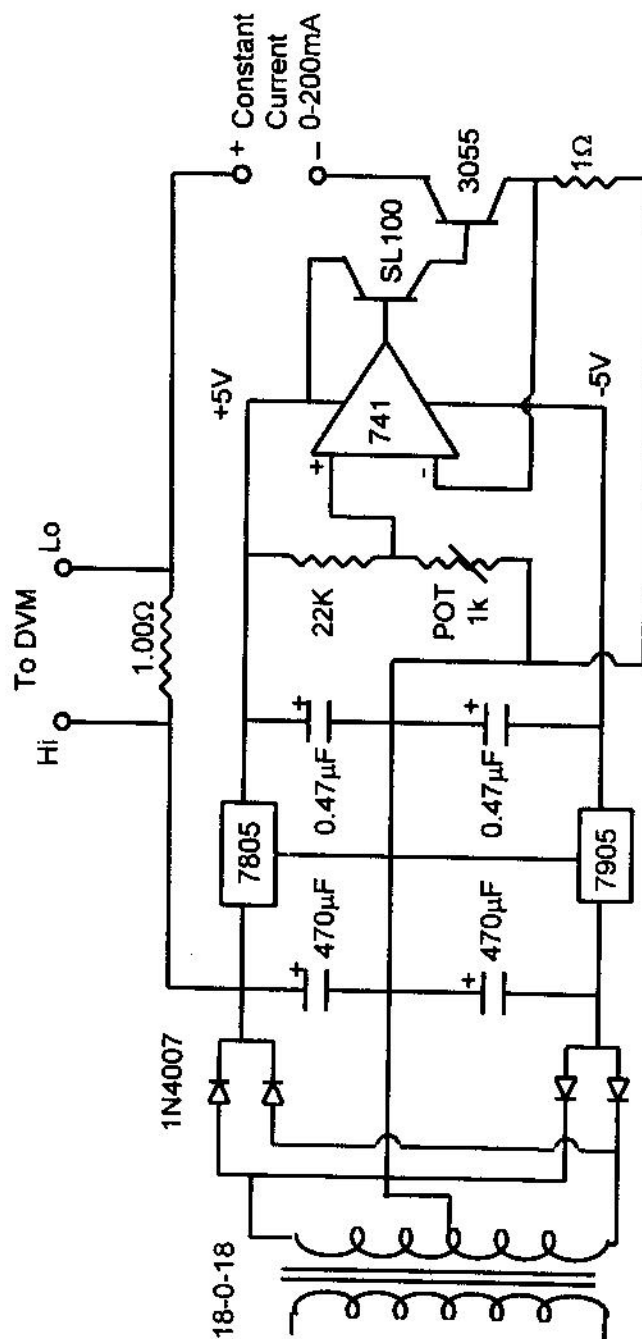
INTRODUCTION

It is a IC regulated current source to provide a constant current to the probe irrespective of the changing resistance of the sample due to change in temperatures/magnetic field.

The basic scheme is to use the feed-back principle to limit the load current of the supply to a pre-set maximum value. Variation in the current are achieved by a potentiometer. the supply is a highly regulated and practically ripple free d.c. source. The current is measured with a 3½ digit LED display for greater resolution and reading convenience.

SPECIFICATIONS

Open Circuit Voltage	: 10 V
Current Range	: 0-20 mA & 0-200mA
Resolution	: 10 μ A at 20mA range
Load regulation	: 0.05 % for 0 to full load
Line regulation	: 0.05% for 10 % variation
Input	: 220 V \pm 10%, 50 Hz.
Display	: 3½ digit 7 segment LED display (12.5 mm height) with autopolarity and decimal indication
Overload Indicator	: Sign of 1 on the left & blanking of other digits



CONSTANT CURRENT SOURCE